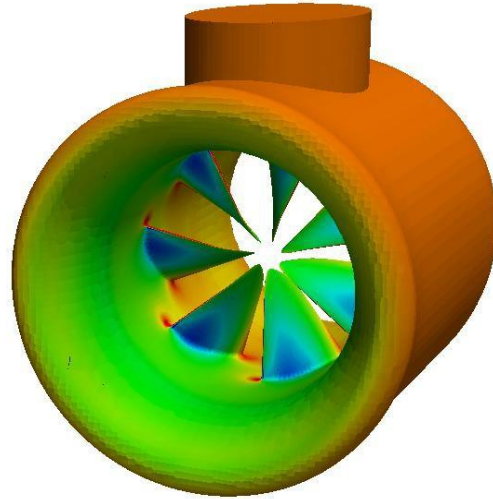
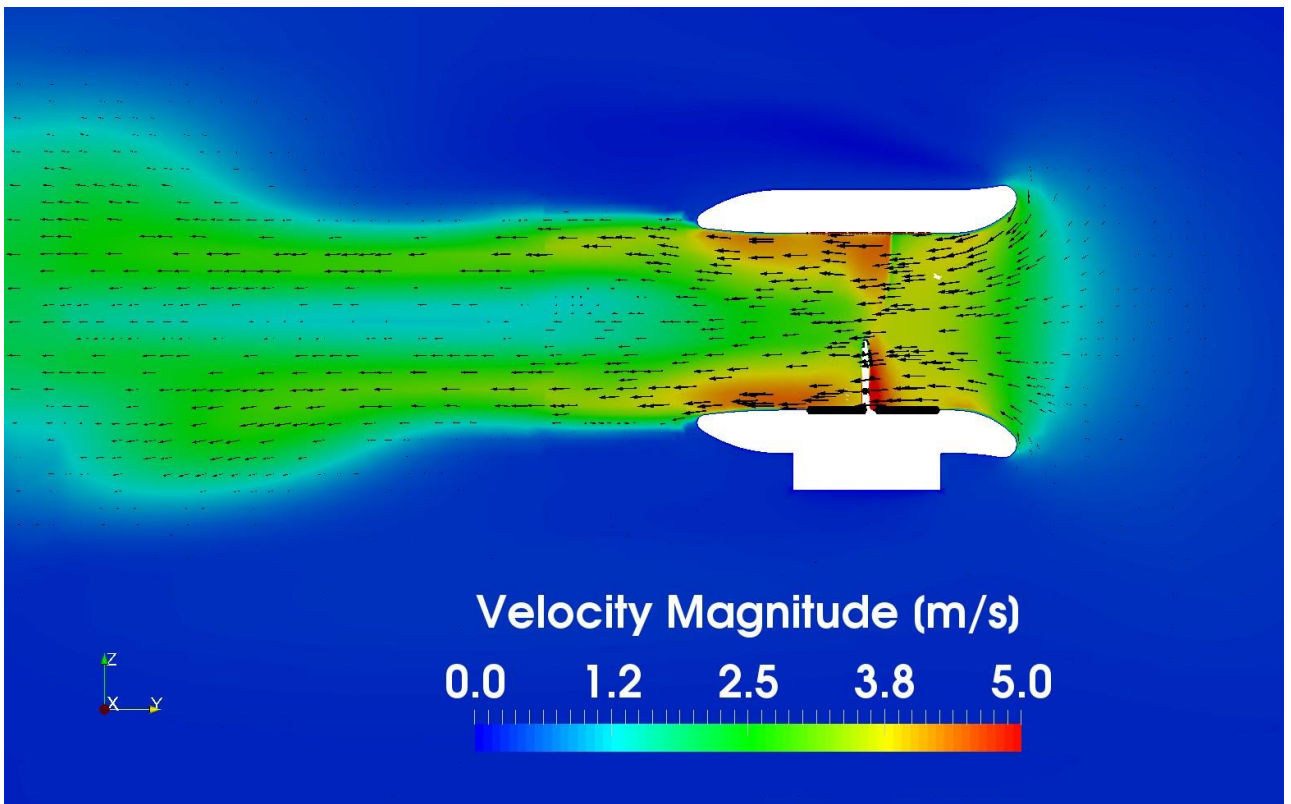


1000 RPM

The figure to the right shows static pressure on the surface on the rotor and stator. The figure below shows the velocity magnitude and velocity vectors in a plane through the center of the rotor.

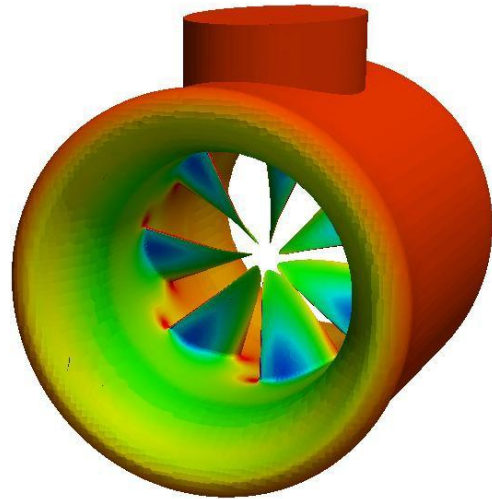


Static Pressure (Pa)

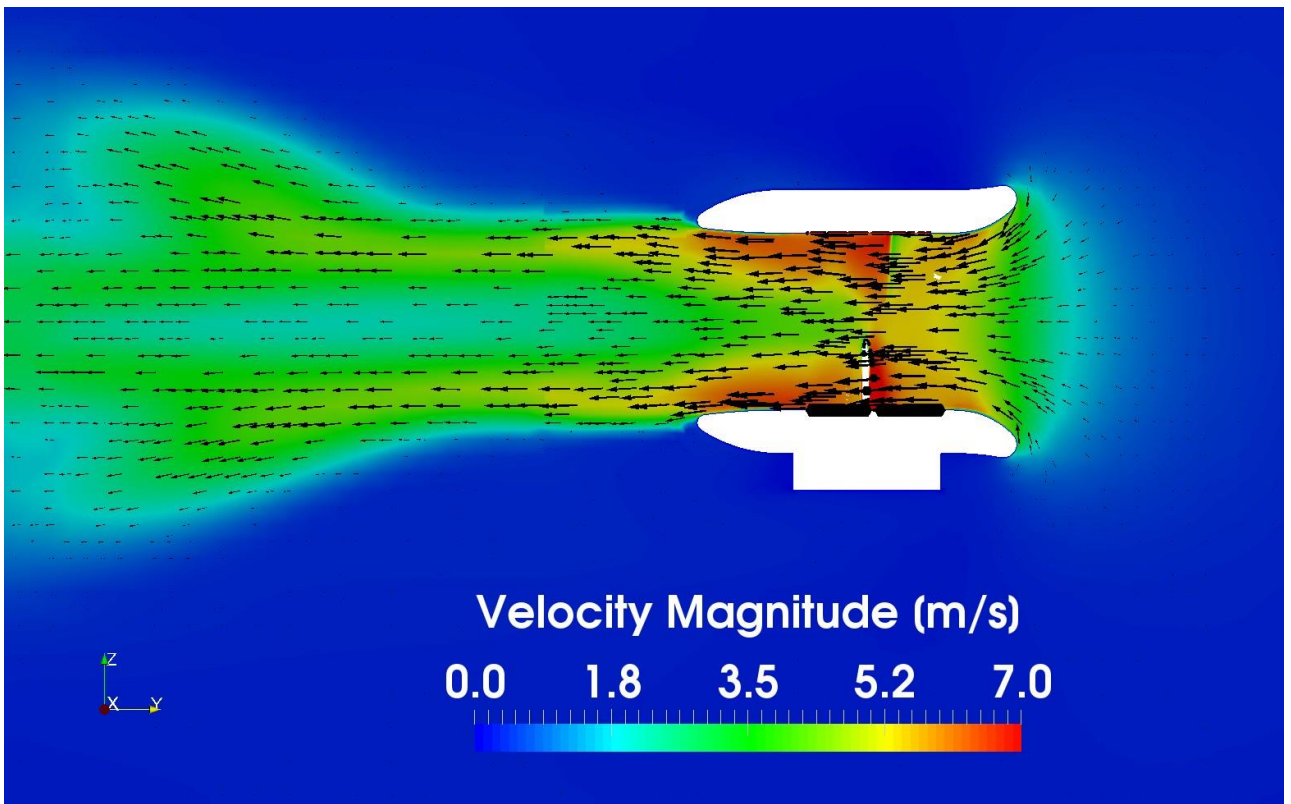
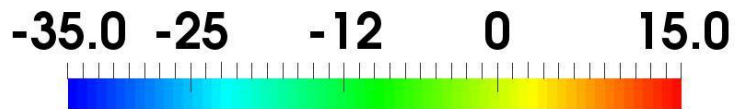


1500 RPM

The figure to the right shows static pressure on the surface on the rotor and stator. The figure below shows the velocity magnitude and velocity vectors in a plane through the center of the rotor.

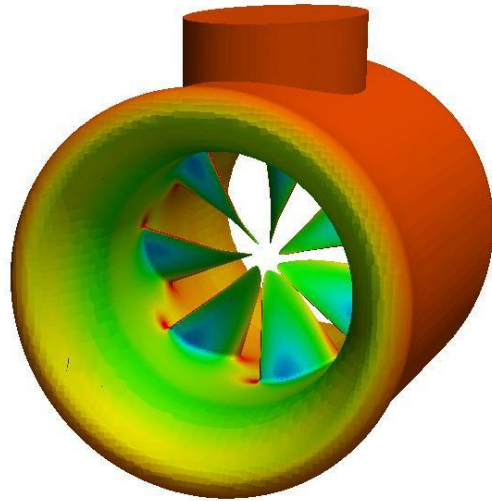


Static Pressure (Pa)

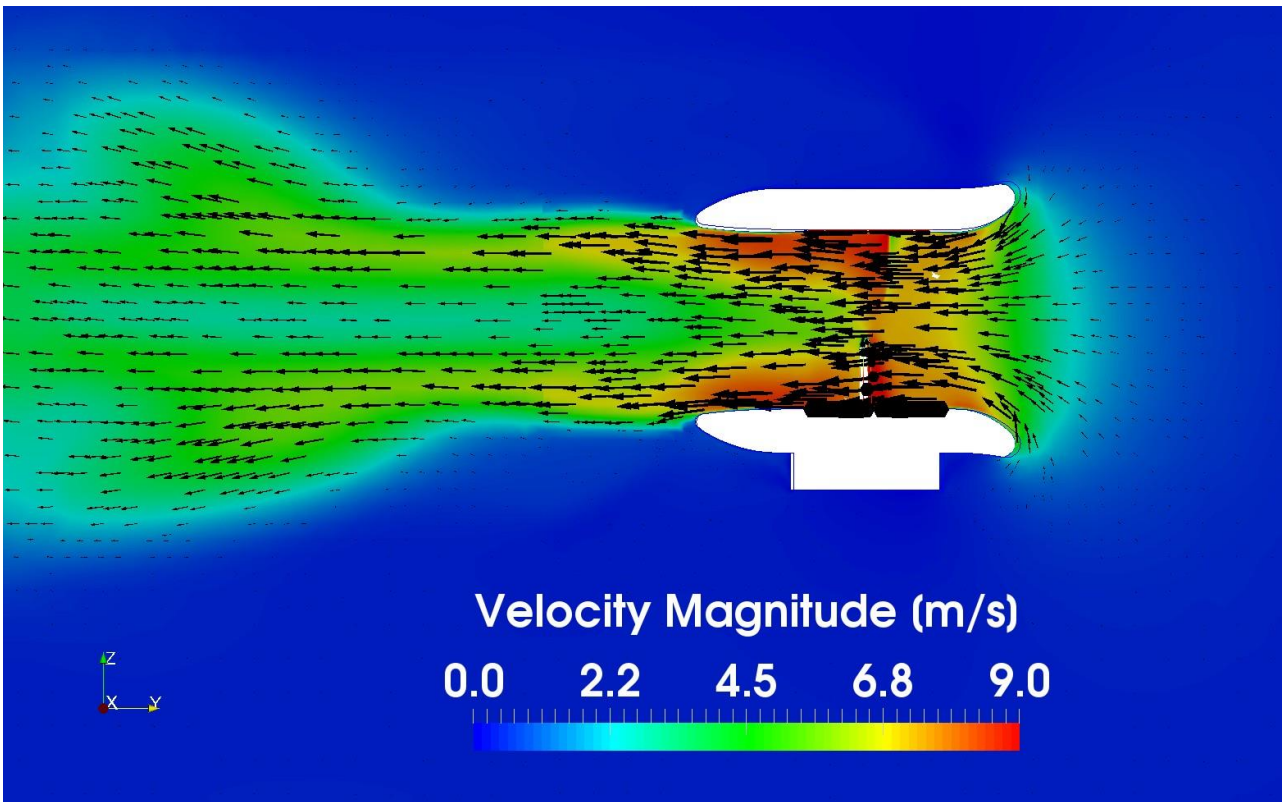


2000 RPM

The figure to the right shows static pressure on the surface on the rotor and stator. The figure below shows the velocity magnitude and velocity vectors in a plane through the center of the rotor.



Static Pressure (Pa)



Velocity Magnitude (m/s)

